

Samba beats bring carnival atmosphere to Karratha

Bright colours and samba beats brought the streets of Karratha to life during the recent Red Earth Arts Festival (REAF).

Through CITIC Pacific Mining's (CPM) arts partnership with KULCHA Multicultural Arts of Western Australia, the Pilbara Multicultural Association and KULCHA created a Pilbara Samba Band to play at the festival.

Samba is a type of dance and music recognised around the world as a symbol of Brazil and the Brazilian Carnival.

In the lead up to the REAF Festival KULCHA artists held free drumming workshops for Shire of Roebourne residents interested in performing in the drumming spectacular at the festival finale.

The group had a fantastic time making music and brought a real carnival atmosphere to Karratha. Next year it is hoped more people will join the group so they can be bigger, brighter and louder.



Samba drumming and dancing through the streets of Karratha.

December 2011

Inside

Project progress

Major operating vessels arrive

Award winners

Families fly into site

Working up a sweat for charity

Samba beats in Karratha

Momentous Movember effort

BBQ fit for the Queen

Local success story at Sino Iron project

A committed workforce at all levels of operation and management is driving the success of local contractor Murphy Pipe and Civil.

Murphy Pipe and Civil is a leading Australian civil construction company which provides clients with some of the most advanced innovations in purpose-built equipment ever developed for the water, gas and mining sectors.

Working in collaboration with CITIC Pacific Mining (CPM) and lead engineering, procurement and construction contractor MCC, Murphy Pipe and Civil recently completed three major pipelines, each around 30km long, at the Sino Iron project.

It is the second project Murphy Pipe and Civil has delivered for the project, after completing the 17km tailings return pipeline late in 2010.

At the peak of construction, Murphy Pipe and Civil employed more than 340 workers on site, including welders, machine operators, labourers, coating technicians and quality assurance inspectors. Machinery used in operation included 25 excavators, 11 side booms and eight 40-tonne dump trucks.

The workforce was a combination of Murphy Pipe and Civil key project management personnel and a construction team sourced from WA and other parts of Australia.

Murphy Pipe and Civil Project Manager Barry Heverin said it was a huge effort to mobilise so many workers and so much machinery in such a short space of time.



Over 100 kilometres of trenches and pipelines were constructed.

"However, we were able to work with CPM and MCC very effectively to deliver the project on time and on budget," Mr Heverin said.

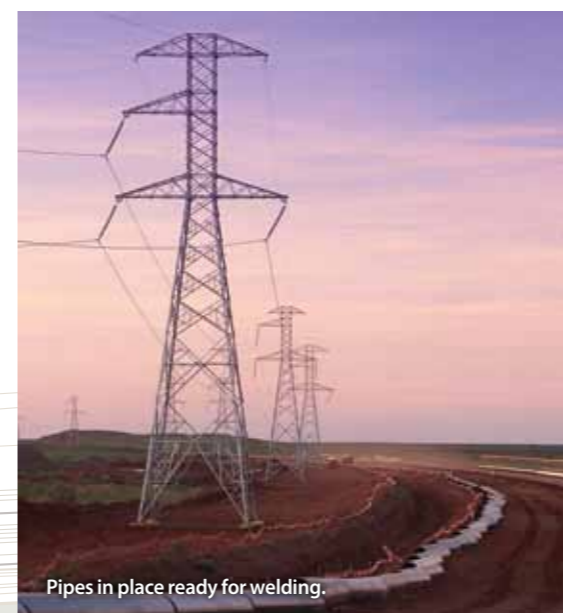
"We have a fantastic workforce, from the guys picking up skids and driving the trucks, right through to our QA employees and the management team. Everyone has worked together to make this a success for our company and for the client."

The work done by Murphy Pipe and Civil is just one example of CPM's commitment to using local contractors and suppliers.

CPM's Executive Director Commercial Services Fei Xu said over the last 12 months CPM had awarded contracts for goods and services worth almost \$350 million. "Of those, 97 per cent of the value went to Australian-based companies, with 81 per cent going to Western Australian-based companies," Mr Xu said.

Fast facts

- Over the life of the Sino Iron project, more than 70 per cent of goods and services will be sourced from within Australia.
- CPM uses industry capability network ProjectConnect and the Pilbara Business Capability Register ePilbara to promote opportunities to suppliers in the Pilbara.



Pipes in place ready for welding.

Barbecue fit for the Queen

Three CPM volunteers helped cook up a storm at the Big Aussie Barbecue held on Perth's Esplanade in October to mark the end of Queen Elizabeth II and Prince Phillip's visit to Perth.

CPM supported community partner the Clontarf Foundation who were one of the day's fundraising beneficiaries.

The barbecue also topped off a memorable few days for the Clontarf Foundation as the Queen, two days earlier, delighted students by visiting Clontarf Aboriginal College. Her Majesty watched the students play football, cook kangaroo stew and scones, and she officially opened new on-site hostel which will accommodate around 80 Clontarf Academy students in 2012.



CPM volunteers Jane McGuire, Emma Durbridge and Darren Varcoe cooked up a storm at the Big Aussie BBQ.

Get connected

Information and employment enquiries
www.citicpacificmining.com or 1800 991 933
Register for e-news updates online at www.citicpacificmining.com

Momentous Movember effort

CPM celebrated the moustache in November, or Movember as the month is now known, to help improve men's health across Australia, specifically awareness of prostate cancer and depression.

A fundraising raffle offered more than \$10,000 in prizes, which were kindly donated by project contractors, and Mo-Parades were staged for Site and Perth 'Mo-Bros' to strut their stuff and show off their moustache-growing efforts.

The 'SiMo Iron' team, including the 'Desal Warriors' made up of Desalination Plant workers, had raised \$49,727 (at time of print) for the global fundraising initiative. This year was the inaugural Movember Mine Challenge and the 'CPM - SiMo Iron' team was placed 2nd (at time of print) - a truly momentous effort!

Congratulations to everyone who got behind the 'CPM - SiMo Iron' Movember fundraiser.



On site at Village 123 Miss Movember was ISS' Olivia McGoldrick and Man of Movember was Cimeco's Andrew Beare.

Project progress

Milestones continue to be reached at the Sino Iron project in the lead up to first production in mid-2012:

- In the mine-pit, individual load tests have been completed for the first crusher and the line 1 conveyor belt has been installed. The power distribution system is ready to be energised. The major components of the second crusher have also been installed.
- Stockpile construction is complete in the concentrator area with ongoing punch list clearance. The third group of mills has been delivered to site and positioned. Mechanical and piping installation of the Line 1 AG mill is nearly complete. The ball mill and first magnetic separation mechanical installation for Line 1 is complete excluding the liner and cranes. Second magnetic separation piping and electrical installation is complete. The main e-house is ready to be energised; water cooling and air compressor systems have been installed and pump station installation is underway.
- At the power station, gas turbines 3 and 4 have been fired, with synchronisation and load testing (under 7MW) also completed. Lube oil flushing and stationary commissioning is progressing on gas turbines 5, 6 and 7. Lube oil flushing has been completed for steam turbines 1 and 2.
- Hydro tests have been carried out on the desalination, return water and concentrate slurry pipelines, which are now ready for integrated commissioning. Main substation electrical testing has been completed and is ready to be energised.
- Major port assets including four barges, two tugs and the first of two transshippers (the first of their kind in WA waters) have arrived.
- In the port area, piping and electrical installation has been completed for building 1 of the dewatering plant and individual equipment testing is underway. Conveyor structure and mechanical installation has been completed at the stockyard and belt installation is progressing. Hydro tests have been carried out on the concentrate thickeners and power distribution systems have been installed throughout the area.
- At the desalination plant, pressure testing and bubble tests have been completed on the east train and endurance testing has been completed on all three intake pumps. Loop checking is ongoing. Mechanical, electrical and instrumentation installation in the west train is progressing and mechanical installation for the west train pre-treatment is nearing completion.
- Civil work has been completed for all workshops in the mining infrastructure area and steel structure erection is underway.



Installation of the first two crushers and conveyor system are progressing well.



The second mill is installed at the busy concentrator area.

Major operating vessels arrive at Cape Preston

It has been a busy and exciting time at the Sino Iron project's port over recent months with the arrival of four barges, two tugs and the first of two transshippers.

During September and October, these major port assets arrived at Cape Preston after travelling more than 3,000 nautical miles from China. The product handling barges were towed by a large sea salvage tug and the transshipper and tugs arrived on board a semi-submersible ship.

Executive Director Port Operations Andrew Thomson said the transshipper was the most significant of all the vessels. "Not only is the transshipper the heart of the project's shipping operation, it is the first vessel of its kind to arrive in Western Australia," Mr Thomson said.

This leaves the second transshipper as the only vessel outstanding from the first-stage operating fleet. Construction of this transshipper is expected to be completed around July next year. "As tonnage increases there will be further barges and tugs purchased to ensure that transshipping capacity will match demand," Mr Thomson said.



Magnetic I and Magnetic II at Cape Preston.

Families fly into site

For four Saturdays in October, family members of CITIC Pacific Mining (CPM) employees had an opportunity to see where their loved ones work.

CPM flew family members to the Sino Iron project for the family days, which were a hit with employees and their visitors. Not only did families get a first-hand look at the project, they also got reassurance and peace of mind that their loved ones were being looked after while working away from home.

General Manager Mining Scott de Kruijff said CPM recognised and embraced the enormous benefit of the family days to both staff and family members. "It's best practice in managing a fly-in fly-out workforce and helps make the FIFO lifestyle easier for employees and their families," he said.



Friends and family on site.

Congratulations

Gerard Neesham, CEO of our community partner Clontarf Foundation, was recognised as one of the State's most outstanding citizens recently.

The former Fremantle Dockers coach and mentor was a finalist in Western Australia's Australian of the Year Awards 2012. CPM commends this worthy recognition for the hard work Gerard and his team put in to foster opportunities for Indigenous youth.



Gerard with some Clontarf students.

Congratulations to the ISS team running CPM's Village 123, who were recently crowned Site of the Year at ISS' inaugural Energy and Resource Division Awards. Organisers said Village 123 was a standout for its excellent team spirit and top-notch service.



ISS' Brad McDowell, Todd Gorey, Corry Westlake, Gemma Cooper and Dan Holman.

Working up a sweat for child health research

More than 50 CITIC Pacific Mining (CPM) employees and contractors swapped their hard hats and boots for running shoes and exercise gear in October in support of child health research.

It was the fifth year the Foxtel Lap had been held in Perth but this year was the first time teams from a remote location had taken part in the fundraiser. While city teams took to the Esplanade Stage in Perth, CPM teams clocked up 100-metre laps on treadmills and bikes at the Sino Iron project's Eramurra Village, about 100km south west of Karratha.

CPM teams included individuals from CPM, UGL, Nilsens, Programmed Construction and Maintenance, MCC, Redline and Toll, all completing as many 100-metre laps as they could in 20 minutes.

Four treadmill teams completed 1,449 laps and two bike teams completed 2,190 laps. The effort raised approximately \$7,000 for the Murdoch Children's Research Institute, with about half these funds coming from corporate sponsors.



The CPM team hit the treadmills for charity.